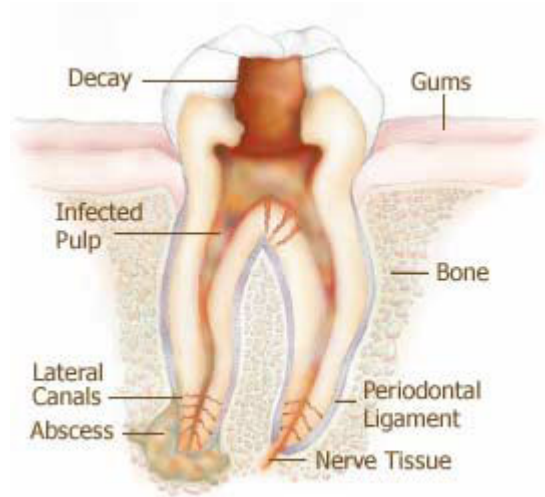


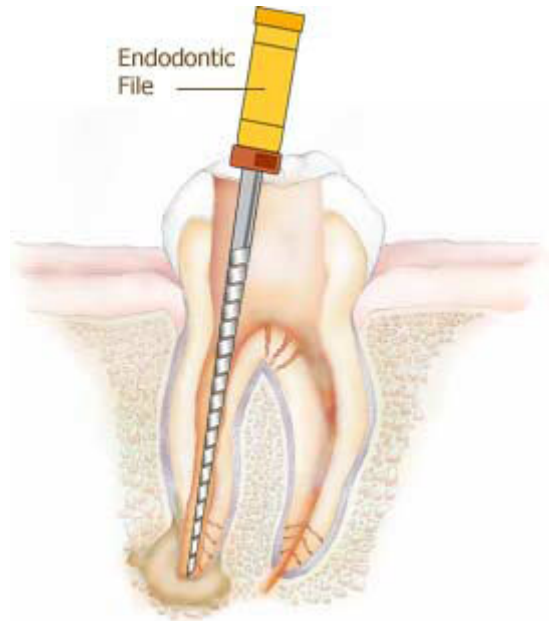


ROOT CANAL TREATMENT:

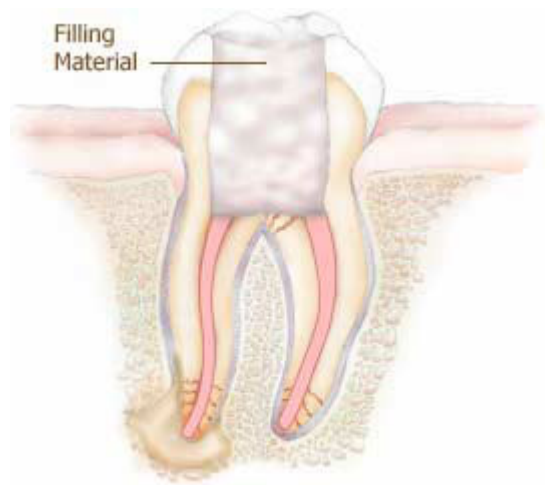
1. DEEP DECAY LEADS TO BACTERIAL INFECTION OF THE TOOTH'S NERVE, CAUSING AN ABSCESS.



2. ACCESS, CLEANING, AND SHAPING



3. FILLING OF ROOT CANALS, PLACEMENT OF TEMPORARY FILLING



4. RESTORATION OF TOOTH WITH BUILD-UP AND CROWN BY DR. KOCH.

